

# Victims of UCR Part I Crimes

## Temporal Distribution

	Violent Crimes			Crimes Against Property			Total Incidents				
	2015	2014	5-yr Wt Avg	2015	2014	5-yr Wt Avg	2015	2014	5-yr Wt Avg	Change from Last Year	Change from 5-yr Wt Avg
<b>January</b>	35	23	24	254	246	226	289	269	250	+20 (7%)	+39 (16%)
<b>February</b>	43	26	32	199	197	199	242	223	231	+19 (9%)	+11 (5%)
<b>March</b>	42	25	34	231	195	207	273	220	241	+53 (24%)	+32 (13%)
<b>April</b>	37	24	30	218	254	252	255	278	282	-23 (-8%)	-27 (-10%)
<b>May</b>	41	30	31	290	335	307	331	365	338	-34 (-9%)	-7 (-2%)
<b>June</b>	44	32	30	331	339	310	375	371	340	+4 (1%)	+35 (10%)
<b>July</b>	46	35	33	342	376	357	388	411	390	-23 (-6%)	-2 (-1%)
<b>August</b>	41	29	35	352	342	328	393	371	363	+22 (6%)	+30 (8%)
<b>September</b>	44	30	31	336	335	302	380	365	333	+15 (4%)	+47 (14%)
<b>October</b>	44	40	38	287	291	290	331	331	328	+0 (0%)	+3 (1%)
<b>November</b>	28	26	29	261	264	264	289	290	293	-1 (-0%)	-4 (-1%)
<b>December</b>	31	37	37	258	297	279	289	334	316	-45 (-13%)	-27 (-9%)
<b>YTD</b>	<b>476</b>	<b>357</b>	<b>384</b>	<b>3359</b>	<b>3471</b>	<b>3321</b>	<b>3835</b>	<b>3828</b>	<b>3705</b>	+7 (0%)	+130 (4%)
<b>ANNUAL</b>	<b>476</b>	<b>357</b>	<b>384</b>	<b>3359</b>	<b>3471</b>	<b>3321</b>	<b>3835</b>	<b>3828</b>	<b>3705</b>		

In the UCR Program, the offenses of criminal homicide, forcible rape, and aggravated assault are Crimes Against the Person. For these crimes, one offense is counted for each victim. Robbery, burglary, larceny-theft, motor vehicle theft, and arson are Crimes Against Property. For these crimes, one offense is counted for each distinct operation or attempt, except in the case of motor vehicle theft for which one offense is counted for each stolen vehicle and one offense for each attempt to steal a motor vehicle. The FBI considers Violent Crimes to include Crime Against the Person and robbery. The reporting procedures of these offenses follows those of the UCR Program.

Notice: the data in these tables are dynamic and may change as incident cases are reclassified, records expunged and/or errors corrected.

Source: Lafayette Police Department • ONESolution RMS  
 Crime Analyst • Steve Hawthorne, CLEA, CCIA

## Victims of Crime Against Persons Temporal Distribution

	Homicide			Rape			Robbery			Aggravated Assault			Totals					
	2015	2014	5-yr Wt Avg	2015	2014	5-yr Wt Avg	2015	2014	5-yr Wt Avg	2015	2014	5-yr Wt Avg	2015	2014	5-yr Wt Avg	Change from Last Year	Change from 5-yr Wt Avg	
January	0	0	0	6	2	2	10	7	5	19	14	17	35	23	24	+12 (52%)	+11 (46%)	
February	0	0	0	4	6	4	9	5	5	30	15	23	43	26	32	+17 (65%)	+11 (34%)	
March	0	0	0	7	2	4	9	6	4	26	17	26	42	25	34	+17 (68%)	+8 (24%)	
April	1	0	0	5	2	3	6	3	3	25	19	24	37	24	30	+13 (54%)	+7 (23%)	
May	0	0	0	4	8	5	13	5	5	24	17	21	41	30	31	+11 (37%)	+10 (32%)	
June	0	0	0	4	5	4	7	9	7	33	18	19	44	32	30	+12 (38%)	+14 (47%)	
July	0	0	0	5	3	4	4	10	6	37	22	23	46	35	33	+11 (31%)	+13 (39%)	
August	2	1	0	3	1	3	11	9	6	25	18	26	41	29	35	+12 (41%)	+6 (17%)	
September	0	0	0	3	7	5	5	4	5	36	19	21	44	30	31	+14 (47%)	+13 (42%)	
October	1	0	1	6	5	4	6	11	8	31	24	25	44	40	38	+4 (10%)	+6 (16%)	
November	0	0	0	3	1	1	8	10	8	17	15	20	28	26	29	+2 (8%)	-1 (-3%)	
December	0	1	0	3	4	3	8	11	8	20	21	26	31	37	37	-6 (-16%)	-6 (-16%)	
YTD	4	2	1	53	46	42	96	90	70	323	219	271	476	357	384	+119 (33%)	+92 (24%)	
ANNUAL	4	2	1	53	46	42	96	90	70	323	219	271	476	357	384			

In the UCR Program, the offenses of criminal homicide, forcible rape, and aggravated assault are Crimes Against the Person. For these crimes, one offense is counted for each victim. The FBI considers Violent Crimes to include Crime Against the Person and robbery. The reporting procedures of these offenses follows those of the UCR Program.

Source: Lafayette Police Department • ONESolution RMS  
Crime Analyst • Steve Hawthorne, CLEA, CCIA

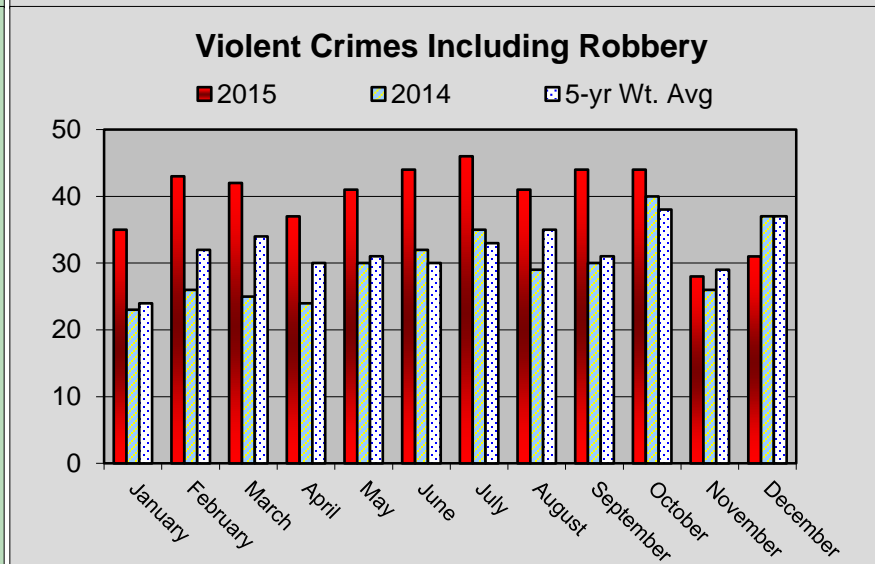
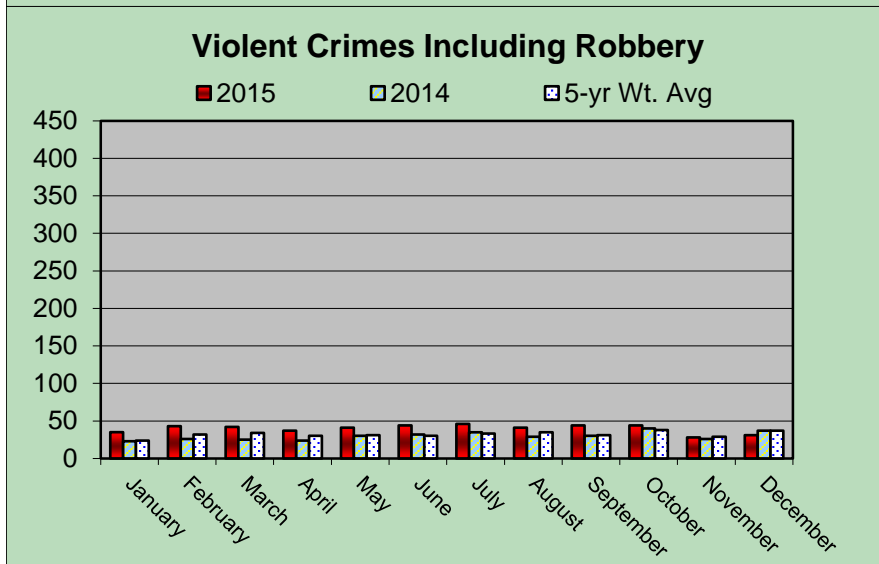
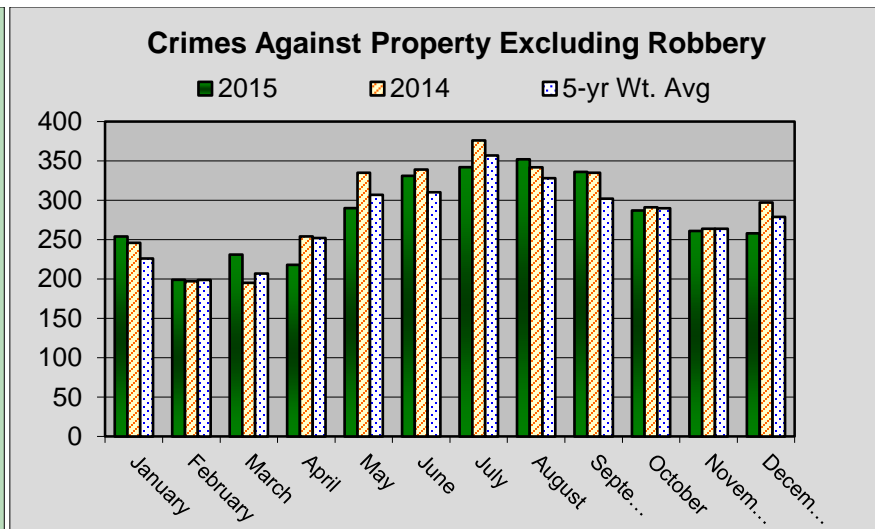
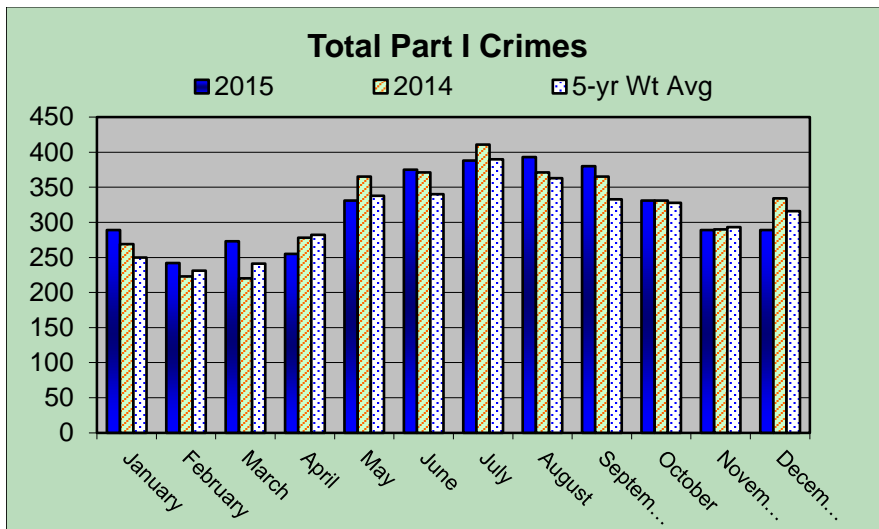
## Victims of Crimes Against Property Temporal Distribution

	Burglary			Theft (larceny)			Motor Vehicle Theft			Arson			Totals				
	2015	2014	5-yr Wt Avg	2015	2014	5-yr Wt Avg	2015	2014	5-yr Wt Avg	2015	2014	5-yr Wt Avg	2015	2014	5-yr Wt Avg	Change from Last Year	Change from 5-yr Wt Avg
<b>January</b>	50	46	46	174	183	167	28	17	12	2	0	1	254	246	226	+8 (3%)	+28 (12%)
<b>February</b>	34	35	39	157	150	148	7	12	11	1	0	1	199	197	199	+2 (1%)	+0 (0%)
<b>March</b>	56	42	46	162	148	151	13	5	9	0	0	1	231	195	207	+36 (18%)	+24 (12%)
<b>April</b>	49	49	52	154	191	180	15	14	18	0	0	2	218	254	252	-36 (-14%)	-34 (-13%)
<b>May</b>	60	72	69	201	229	212	28	34	25	1	0	1	290	335	307	-45 (-13%)	-17 (-6%)
<b>June</b>	67	64	64	231	247	221	32	24	22	1	4	3	331	339	310	-8 (-2%)	+21 (7%)
<b>July</b>	76	43	57	234	280	264	29	51	34	3	2	2	342	376	357	-34 (-9%)	-15 (-4%)
<b>August</b>	69	58	61	255	250	237	26	34	29	2	0	1	352	342	328	+10 (3%)	+24 (7%)
<b>September</b>	73	60	54	229	244	223	32	30	24	2	1	1	336	335	302	+1 (0%)	+34 (11%)
<b>October</b>	50	59	63	214	209	206	19	21	20	4	2	1	287	291	290	-4 (-1%)	-3 (-1%)
<b>November</b>	47	54	57	198	190	190	13	18	16	3	2	1	261	264	264	-3 (-1%)	-3 (-1%)
<b>December</b>	48	52	57	195	227	209	15	18	13	0	0	0	258	297	279	-39 (-13%)	-21 (-8%)
<b>YTD</b>	<b>679</b>	<b>634</b>	<b>665</b>	<b>2404</b>	<b>2548</b>	<b>2408</b>	<b>257</b>	<b>278</b>	<b>233</b>	<b>19</b>	<b>11</b>	<b>15</b>	<b>3359</b>	<b>3471</b>	<b>3321</b>	<b>-112 (-3%)</b>	<b>+38 (1%)</b>
<b>ANNUAL</b>	<b>679</b>	<b>634</b>	<b>665</b>	<b>2404</b>	<b>2548</b>	<b>2408</b>	<b>257</b>	<b>278</b>	<b>233</b>	<b>19</b>	<b>11</b>	<b>15</b>	<b>3359</b>	<b>3471</b>	<b>3321</b>		

In the UCR Program, the offenses of robbery, burglary, larceny-theft, motor vehicle theft, and arson are Crimes Against Property. For these crimes, one offense is counted for each distinct operation or attempt, except in the case of motor vehicle theft for which one offense is counted for each stolen vehicle and one offense for each attempt to steal a motor vehicle. LPD reports robbery frequencies within the Violent Crimes category.

Source: Lafayette Police Department • ONESolution RMS  
Crime Analyst • Steve Hawthorne, CLEA, CCIA

# Victims of UCR Part I Crime Temporal Distribution

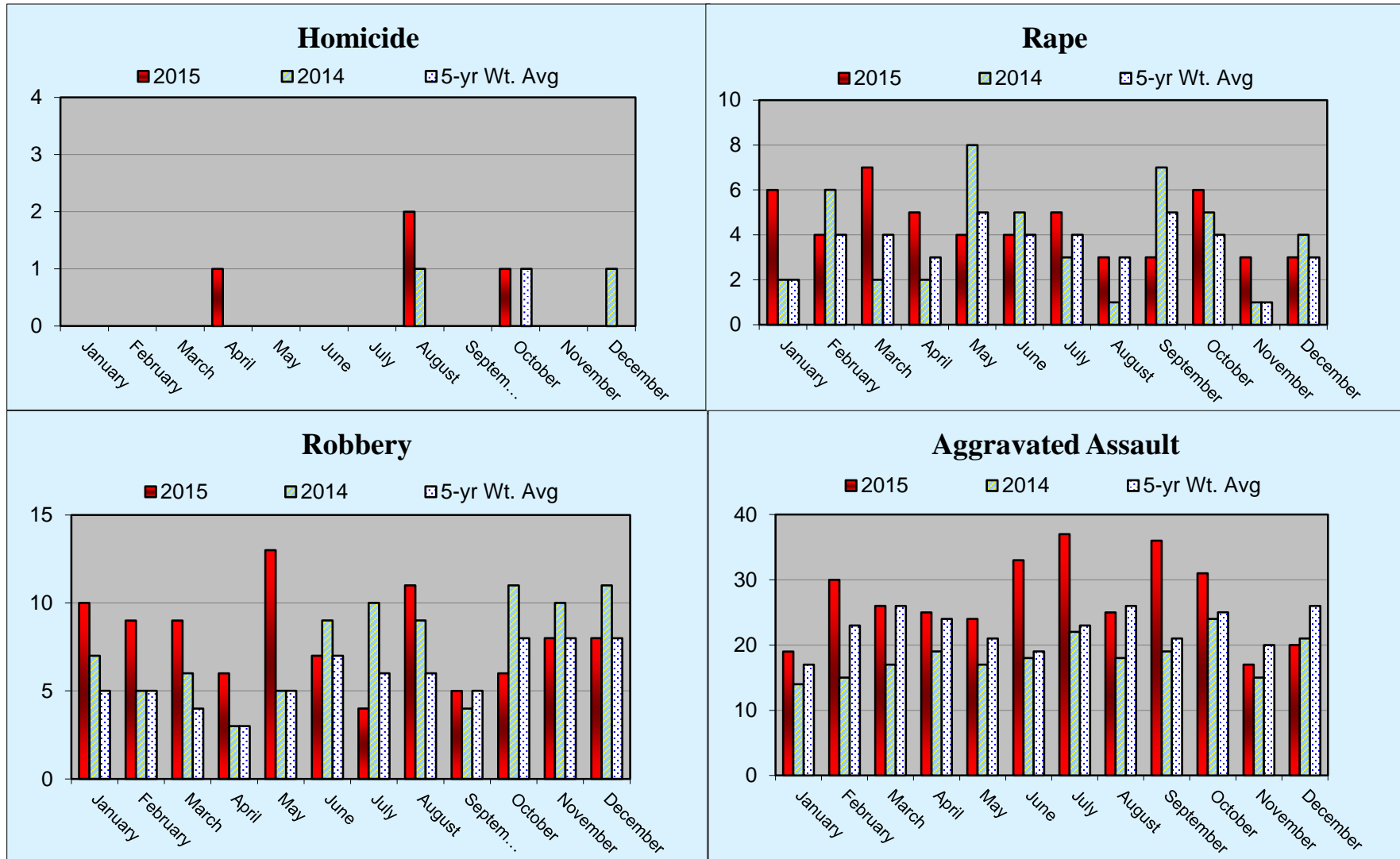


An equal X-axis maximum persuades visual comparison between the two graphs above.

An unequal X-axis maximum disuades visual comparison between the displayed graphs.

# Victims of Crimes Against Persons and Robbery

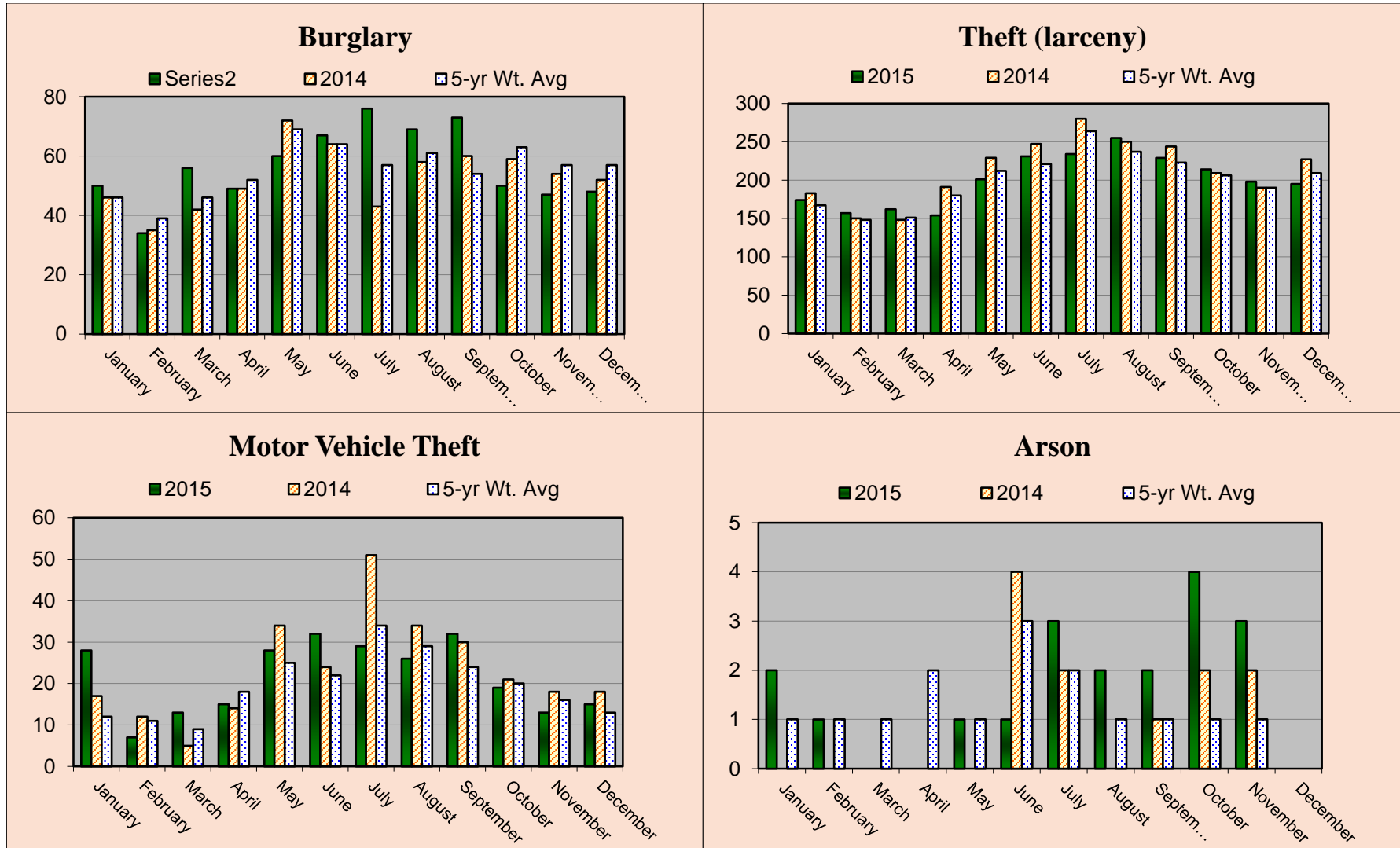
## Temporal Distribution



An unequal X-axis maximum disuades visual comparison between the displayed graphs.

# Victims of Crimes Against Property Excluding Robbery

## Temporal Distribution



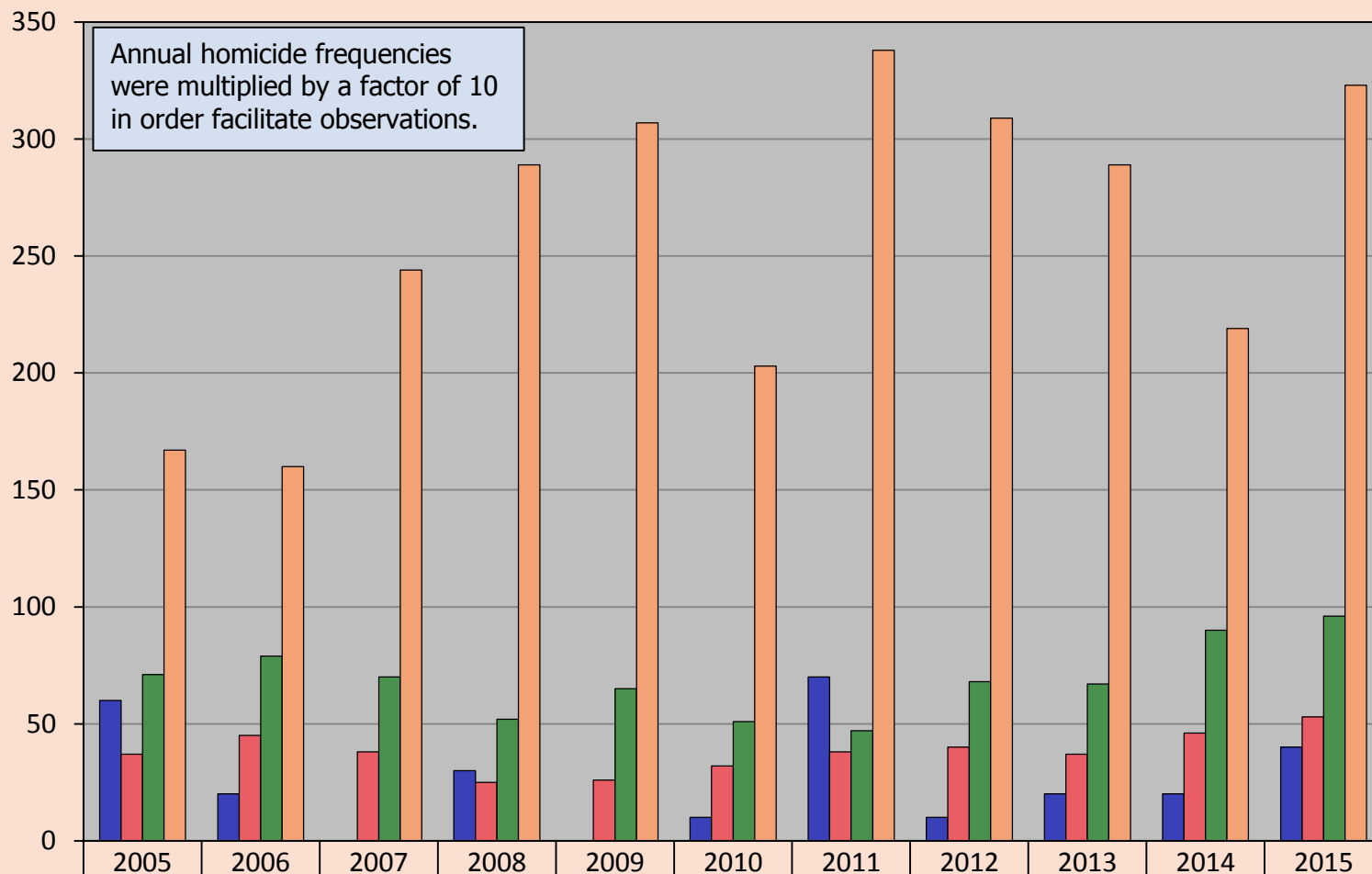
An unequal X-axis maximum disuades visual comparison between the displayed graphs.

## Contribution of UCR Part I Victims to 2015 Totals

Offense	Frequency	% of Total	Theft Offense	Frequency	% of Total
Arson	19	0%	All Other	381	16%
Burglary	679	18%	Bicycle	78	3%
Motor Vehicle Theft	257	7%	From Buildings	584	24%
Theft	2404	63%	From Coin Operated Machines	8	0%
Assault, Aggravated	323	8%	From Motor Vehicle Except Parts	427	18%
Homicide	4	0%	Motor Vehicles Parts and Accessories	121	5%
Robbery	96	3%	Pick Pocketing	5	0%
Rape	53	1%	Purse Snatching	4	0%
<b>Grand Total</b>	<b>3835</b>		Shoplifting	796	33%
Property Crimes = 88% (3359) Violent Crimes = 12% (476)			23% of theft offenses involved stealing from a motor vehicle		

Notice: the data used to create this table is dynamic and may change as incident cases are reclassified, records expunged and/or errors corrected.

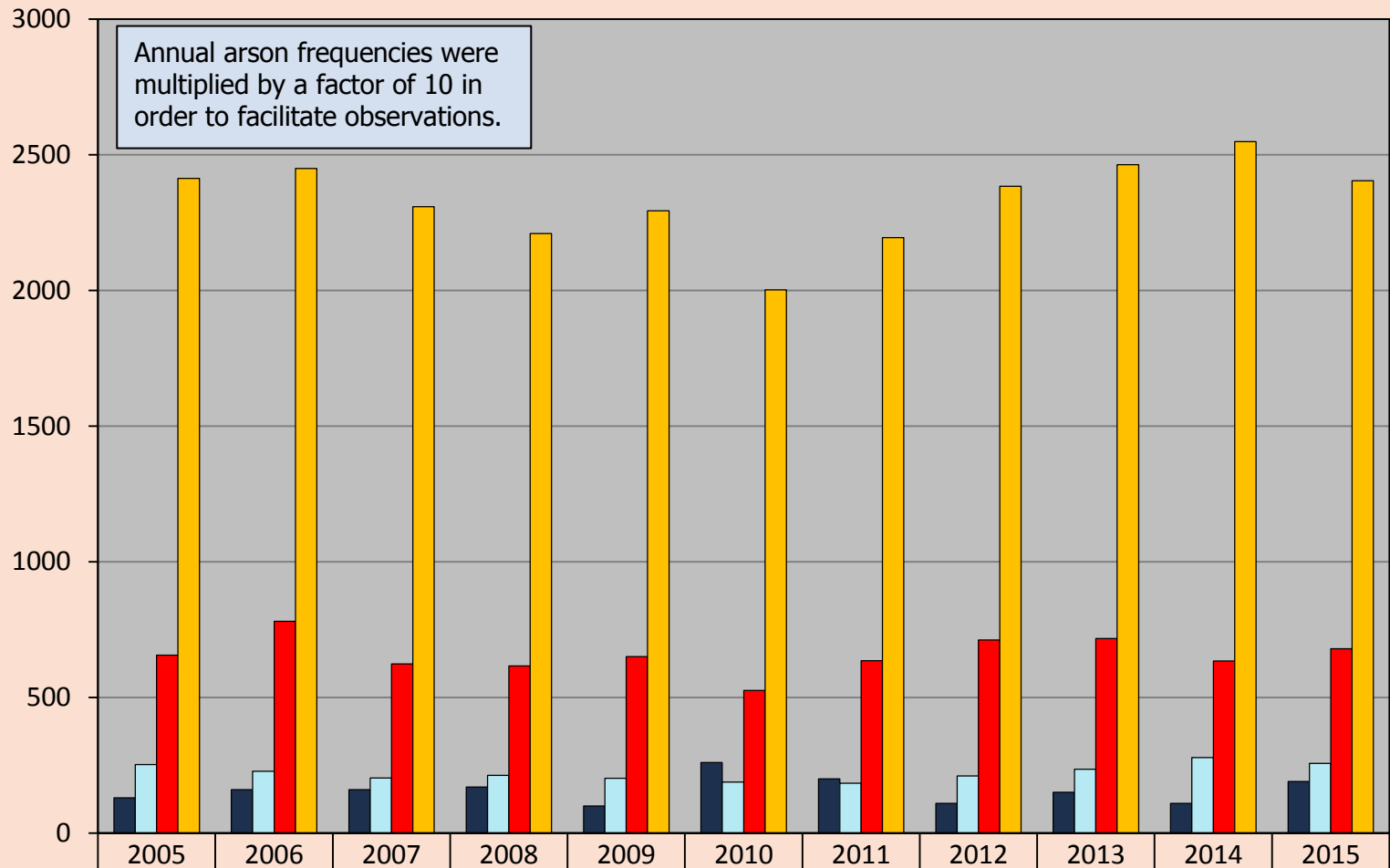
## Victims of Violent Crime Trends Including Robbery



■ Homicide (x10)	60	20	0	30	0	10	70	10	20	20	40
■ Rape	37	45	38	25	26	32	38	40	37	46	53
■ Robbery	71	79	70	52	65	51	47	68	67	90	96
■ Aggravated Assault	167	160	244	289	307	203	338	309	289	219	323

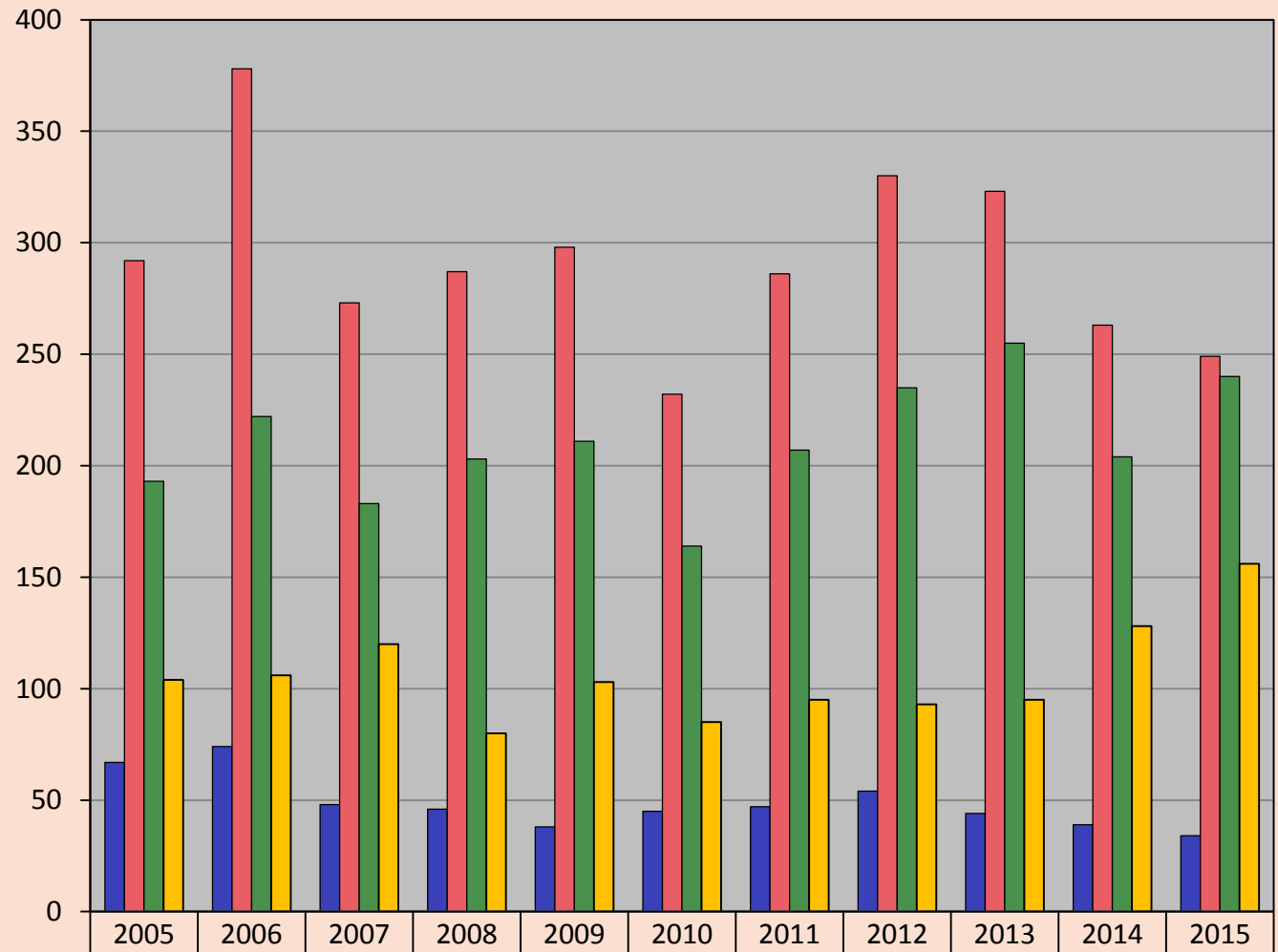


## Victims of Property Crime Trends Excluding Robbery



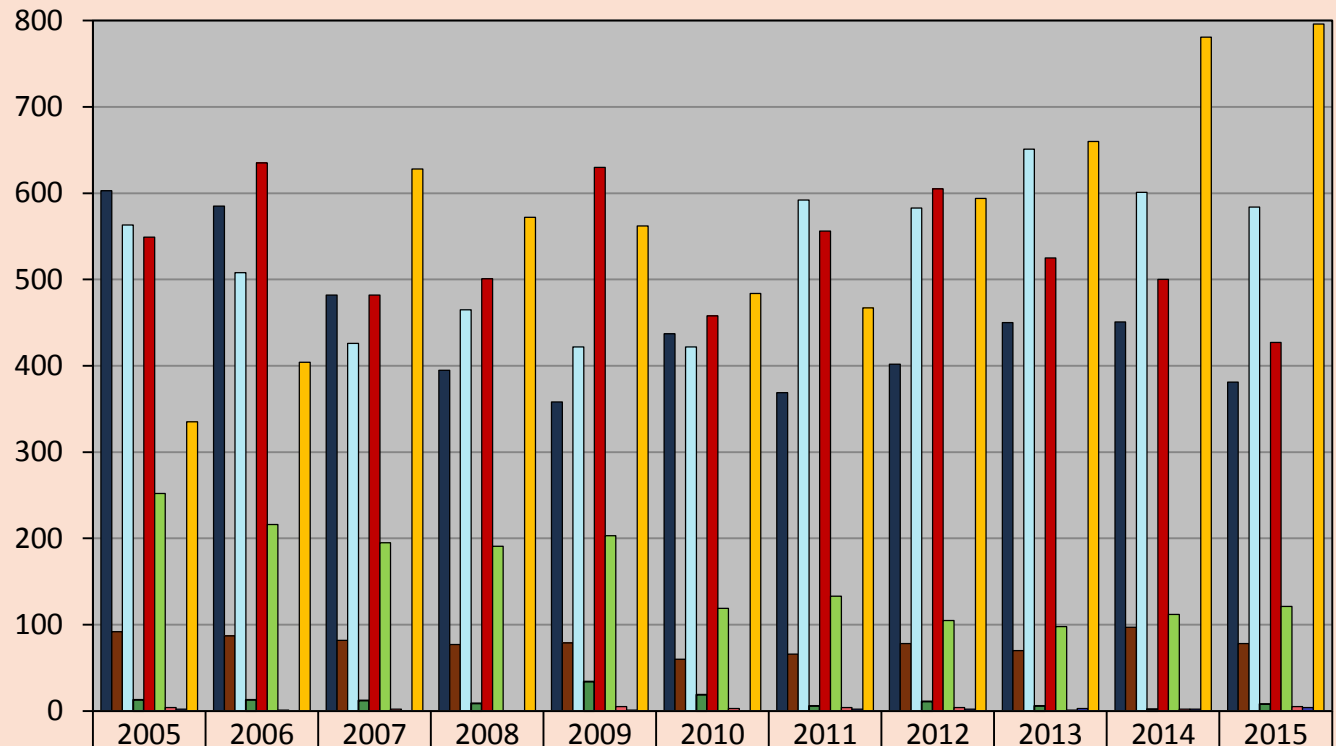
■ Arson (x10)	130	160	160	170	100	260	200	110	150	110	190
■ Motor Vehicle Theft	252	228	203	213	202	188	184	211	235	278	257
■ Burglary	656	780	624	616	650	526	635	712	717	634	679
■ Theft	2413	2449	2309	2210	2294	2002	2195	2384	2464	2548	2404

## Victims of Burglary Trends



■ Attempted	67	74	48	46	38	45	47	54	44	39	34
■ Forcible Entry	292	378	273	287	298	232	286	330	323	263	249
■ Unlawful Entry - No Force	193	222	183	203	211	164	207	235	255	204	240
■ Residential Entry	104	106	120	80	103	85	95	93	95	128	156

## Victims of Theft Trends



	2005	2006	2007	2008	2009	2010	2011	2012	2013	2014	2015
■ All Other	603	585	482	395	358	437	369	402	450	451	381
■ Bicycle	92	87	82	77	79	60	66	78	70	97	78
■ From Buildings	563	508	426	465	422	422	592	583	651	601	584
■ From Coin Operated Machines	13	13	12	9	34	19	6	11	6	2	8
■ From Motor Vehicle Except Parts	549	635	482	501	630	458	556	605	525	500	427
■ Motor Vehicles Parts And Accessories	252	216	195	191	203	119	133	105	98	112	121
■ Pick Pocketing	4	1	2	0	5	3	4	4	1	2	5
■ Purse Snatching	2	0	0	0	1	0	2	2	3	2	4
■ Shoplifting	335	404	628	572	562	484	467	594	660	781	796